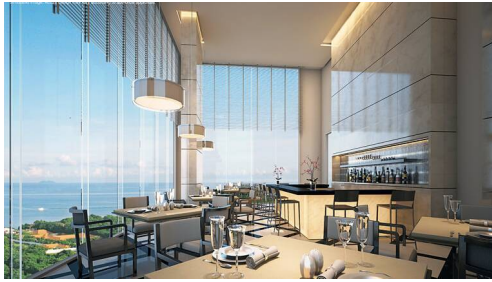


The Vision



Seller Info

Имя:	MyThai Agent
Имя:	MyThai
Фамилия:	Agent
Название компании:	MyThai Property
Тип объявления:	Покупка или продажа
Мобильный:	
Телефон:	+1 (415) 800-2828
Веб-сайт:	http://mythai.property
Страна:	Thailand
Почтовый индекс:	55444
Адрес:	Landao
Обо мне:	I am the official MyThai Property website agent, feel free to contact me at any time!

Listing details

Общее

Название:	The Vision
Недвижимость для:	Продажи
Цена:	฿ 8,390,000.00
Спальни:	2
Ванные комнаты:	2
Площадь:	68 m2 ft
Опубликовано :	18.11.2020

Цены

Ценовая категория:	eyJxIjpb7InR5cGUiOiIxEJIZCBNYXg6Iiwic2l6ZSI6IjQ3bTIiLCJwcmVjZSI6IjU3OTAwMDB8Y3VycmVuY3lfdGhiIn0sIjMiOmsidHlwZSI6IjIiLCJpYjoiODM5MDAwMHxjdXJyZW5jeV90aGlifSwiNCI6eyJ0eXB1IjoiMiBCZWQgTWF4OiIsInNpemUiOiI4N20yIiwicHJpY2UiOiIyMTUwMDAwMHxjdXJyZW5jeV90aGlifX0=
--------------------	--

План оплаты

Сумма залога:	฿ 50,000.00
Contract Deposit:	25% (within 10 days)

Взносы: 50%
Передача в
собственность: 25%

Место нахождения

Город: Паттайя
Район: Pratumnak Hill

ДОПОЛНИТЕЛЬНАЯ ИНФОРМАЦИЯ

E-mail : info@findthaiproperty.com
Mobile (import): +66 (0) 800 844 727

Описание:

The Vision is a project for anyone looking for the ultimate views available in Pattaya. Built on the highest buildable spot in the whole of Pattaya – right at the peak of Pratumnak Hill – no matter which direction your apartment faces and no matter which floor you buy upon, you can be sure that your views are going to be the best in town.

The Vision is also the perfect choice for... View more
The Vision is a project for anyone looking for the ultimate views available in Pattaya. Built on the highest buildable spot in the whole of Pattaya – right at the peak of Pratumnak Hill – no matter which direction your apartment faces and no matter which floor you buy upon, you can be sure that your views are going to be the best in town.

The Vision is also the perfect choice for anyone who wants to be able to get in and out of the centre of the city with the greatest of ease and minimum of traveling times. With baht buses passing within a few metres of The Vision, you are just minutes away from your apartment to all of Pattaya's many attractions including Walking Street and Central Festival.

The facilities at The Vision rival those of luxury tower developments offered at substantially higher prices than you will find here. The majority of the facilities here are located on the 20th floor – the pool, the gardens, the restaurant and the fitness centre – offering spectacular views to all users of the facilities, even if their apartments are on the lower levels.

All units at The Vision are provided on a fully furnished basis – which not only means that the project offers even better value for money than its rivals, but it also takes away the hassle of furnishing it yourself. Investors looking to rent out apartments here can relax in the knowledge that they can start taking tenants immediately after handover without having to run around furnishing the units.

Construction at The Vision is already at an advanced stage, so buyers will not have too long to wait before they can start enjoying all that the development has to offer. And with the developer's long track record of successful real estate projects in Pattaya over the past decade, all buyers can be assured that they "build their promises".

With The Vision being located in such a prime location, with views that are going to stay in all directions for eternity, this project is a wise investment both for those who are looking for apartments that will rent out at a premium price and those who are looking for the perfect holiday home in a convenient and prestigious location. View less