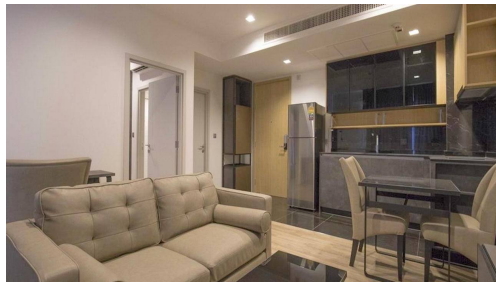


## The Line Jatujak Mochit



### Seller Info

Имя:	MyThai Agent
Имя:	MyThai
Фамилия:	Agent
Название компании:	MyThai Property
Тип объявления:	Покупка или продажа
Мобильный:	
Телефон:	+1 (415) 800-2828
Веб-сайт:	<a href="http://mythai.property">http://mythai.property</a>
Страна:	Thailand
Почтовый индекс:	55444
Адрес:	Landao
Обо мне:	I am the official MyThai Property website agent, feel free to contact me at any time!

### Listing details

#### Общее

Название:	The Line Jatujak Mochit
Недвижимость для:	Аренды
Цена:	฿ 28,000.00
Rent time frame:	В месяц
Спальни:	1
Ванные комнаты:	1
Площадь:	41 m2 ft
Опубликовано :	25.12.2020

#### Место нахождения

Город:	Бангкок
Район:	Phaya Thai / Chatuchak

#### ДОПОЛНИТЕЛЬНАЯ ИНФОРМАЦИЯ

E-mail :	<a href="mailto:info@findthaiproperty.com">info@findthaiproperty.com</a>
Mobile (import):	+66 (0) 800 844 727

Описание:	Reference Number : 2207 1 bedroom 1 bathroom at The Line Jatujak Mochit on 38th Floor available for rent. Fully Furnished
-----------	---

including TV, Fridge, Microwave, Washing Machine. Balcony Accessible from the Living Room. Floor to Ceiling Windows and City View. This condo is built by Thailand\'s leading developer and is linked directly to the BTS Skywalk at Mo Chit / JJ Market Only...View moreReference Number : 2207

1 bedroom 1 bathroom at The Line Jatujak Mochit on 38th Floor available for rent. Fully Furnished including TV, Fridge, Microwave, Washing Machine. Balcony Accessible from the Living Room. Floor to Ceiling Windows and City View. This condo is built by Thailand\'s leading developer and is linked directly to the BTS Skywalk at Mo Chit / JJ Market Only 500m.

12 Month Contract - 28,000 THB/month

6 Month Contract - 29,000 THB/month

Stimulating areas have been created such as a walking or jogging lane for exercise, a yoga area, meeting space or reading and homework corner, as well as a fitness centre, 40-metre long swimming pool and an area for celebrations or entertainment. The designers have selected species of plants that are most suitable for the project to enhance a good quality of life. Plants have been chosen to create an ambience in each zone replicating the nature of different regions such as a riverside zone, an area representing an open plain, a high plains area and a mountainous forest zone, for instance.

With the project situated so close to the BTS, Chatuchak Market and Public Park, the designers view the importance of connectivity (Linkage) with the vicinity as paramount in fostering a good quality of life, creating a route linking various points in the above-mentioned important locations and an atmosphere that is pleasant to look at and safe. View less