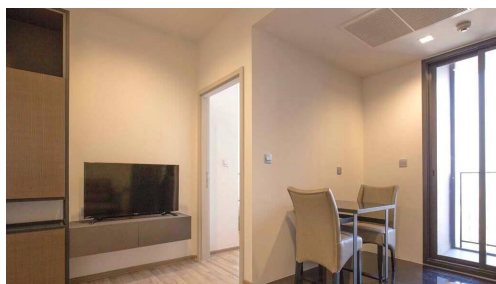


The Line Jatujak Mochit



Seller Info

Имя:	MyThai Agent
Имя:	MyThai
Фамилия:	Agent
Название компании:	MyThai Property
Тип объявления:	Покупка или продажа
Мобильный:	
Телефон:	+1 (415) 800-2828
Веб-сайт:	http://mythai.property
Страна:	Thailand
Почтовый индекс:	55444
Адрес:	Landao
Обо мне:	I am the official MyThai Property website agent, feel free to contact me at any time!

Listing details

Общее

Название:	The Line Jatujak Mochit
Недвижимость для:	Аренды
Цена:	฿ 19,000.00
Rent time frame:	В месяц
Спальни:	1
Ванные комнаты:	1
Площадь:	26 m2 ft
Опубликовано :	22.01.2021

Место нахождения

Город:	Бангкок
Район:	Phaya Thai / Chatuchak

ДОПОЛНИТЕЛЬНАЯ ИНФОРМАЦИЯ

E-mail :	info@findthaiproperty.com
Mobile (import):	+66 (0) 800 844 727

Описание: 1 bedroom / 1 bathroom at The Line Jatujak Mochit on 38th Floor available for rent. Fully Furnished including TV, Fridge, Microwave, Washing

Machine. Balcony Accessible from the kitchen. Floor to Ceiling Windows and City View. This condo is built by Thailand\'s leading developer and is linked directly to the BTS Skywalk at Mo Chit / JJ Market. This project is an extremely unique joint venture... View more 1 bedroom / 1 bathroom at The Line Jatujak Mochit on 38th Floor available for rent. Fully Furnished including TV, Fridge, Microwave, Washing Machine. Balcony Accessible from the kitchen. Floor to Ceiling Windows and City View. This condo is built by Thailand\'s leading developer and is linked directly to the BTS Skywalk at Mo Chit / JJ Market. This project is an extremely unique joint venture with the BTS group and will rarely be found anywhere else in Bangkok.

12 Month Contract - 19,000 THB/month

6 Month Contract - 21,000 THB/month

With a location that has such heavy traffic, it is fortunate the project is so close to the BTS to provide a fast and efficient mode of transportation, with which your easy conveyance to other parts of Bangkok and the surrounding areas is assured. This is in line with how the urban way of life has developed and the designers of the project have been motivated by this ecosystem of connectivity, whilst still keeping safety, attractiveness and the daily routine of consumers at the forefront.

The designers of the project have therefore communicated the identity and context of their inspiration keeping in mind teenagers and working people that have great mobility, and who desire comfort, convenience and ease of travel. Another factor influencing the design is to have a suitable space that is striking and pleasant, with fresh green areas for relaxation. The designers have therefore selected materials that communicate the ambience clearly to create interest, beauty and usefulness for the end-user. For instance, there is a green area for playing sports or to relax in and a seating area for mingling in the centre of the garden and pond.

The textures of materials were selected during the design process to communicate regional landscapes that depict rail travel as the ultimate rapid

transportation method, which can take you to multitude locations with varying scenery, perfectly complimenting the project's location as it is so reliant on the train for travel purposes and resident's desires for mobility and convenience. This will help improve the variety of uses in each area.

Stimulating areas have been created such as a walking or jogging lane for exercise, a yoga area, meeting space or reading and homework corner, as well as a fitness centre, 40-metre long swimming pool and an area for celebrations or entertainment. The designers have selected species of plants that are most suitable for the project to enhance a good quality of life. Plants have been chosen to create an ambience in each zone replicating the nature of different regions such as a riverside zone, an area representing an open plain, a high plains area and a mountainous forest zone, for instance.

With the project situated so close to the BTS, Chatuchak Market and Public Park, the designers view the importance of connectivity (Linkage) with the vicinity as paramount in fostering a good quality of life, creating a route linking various points in the above-mentioned important locations and an atmosphere that is pleasant to look at and safe.

*2085*View less