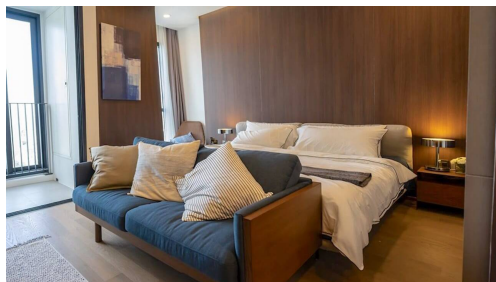


## Ashton Chula Silom



### Seller Info

Имя:	MyThai Agent
Имя:	MyThai
Фамилия:	Agent
Название компании:	MyThai Property
Тип объявления:	Покупка или продажа
Мобильный:	
Телефон:	+1 (415) 800-2828
Веб-сайт:	<a href="http://mythai.property">http://mythai.property</a>
Страна:	Thailand
Почтовый индекс:	55444
Адрес:	Landao
Обо мне:	I am the official MyThai Property website agent, feel free to contact me at any time!

### Listing details

#### Общее

Название:	Ashton Chula Silom
Недвижимость для:	Аренды
Цена:	฿ 34,000.00
Rent time frame:	В месяц
Спальни:	1
Ванные комнаты:	1
Площадь:	35 m2 ft
Опубликовано :	05.02.2021

#### Место нахождения

Город:	Бангкок
Район:	Sathorn / Thonburi

#### ДОПОЛНИТЕЛЬНАЯ ИНФОРМАЦИЯ

E-mail :	<a href="mailto:info@findthaiproperty.com">info@findthaiproperty.com</a>
Mobile (import):	+66 (0) 800 844 727

Описание:	1 Bedroom Unit on 45th Floor Available at the Ashton Chula Silom Condominium. The Bedroom and Living Room area is divided by sliding wall.
-----------	--

Fully Furnished with High End Wooden Furniture, floor to ceiling wooden decoration and wall mirrors. Also Include Washing Machine. Large Built in Wardrobe. Big Balcony which can be made into indoor terrace with external glass balcony door.

The Ashton... View more 1 Bedroom Unit on 45th Floor Available at the Ashton Chula Silom Condominium. The Bedroom and Living Room area is divided by sliding wall. Fully Furnished with High End Wooden Furniture, floor to ceiling wooden decoration and wall mirrors. Also Include Washing Machine. Large Built in Wardrobe. Big Balcony which can be made into indoor terrace with external glass balcony door.

The Ashton Chula Silom has incredible facilities such as Cloud 49 – sky relaxation area with large infinity edge swimming pool, jacuzzi, sauna, steam room and sunken courtyard. Lifestyle club & wine bar, panoramic fitness atrium, panoramic lounge and private library are also available for residents in this luxury condominium.

This condominium is located only 160m from MRT Station Sam Yan and 550m from BTS Station Sala Daeng and Silom Complex Shopping Mall. Very close to Sathorn Financial District, Nightlife and Lumpini Park.

\*1965\*View less