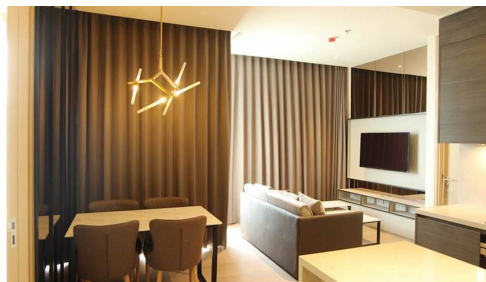


Esse Asoke



Seller Info

Имя:	MyThai Agent
Имя:	MyThai
Фамилия:	Agent
Название компании:	MyThai Property
Тип объявления:	Покупка или продажа
Мобильный:	
Телефон:	+1 (415) 800-2828
Веб-сайт:	http://mythai.property
Страна:	Thailand
Почтовый индекс:	55444
Адрес:	Landao
Обо мне:	I am the official MyThai Property website agent, feel free to contact me at any time!

Listing details

Общее

Название:	Esse Asoke
Недвижимость для:	Аренды
Цена:	฿ 70,000.00
Rent time frame:	В месяц
Спальни:	2
Ванные комнаты:	2
Площадь:	75 m2 ft
Опубликовано :	13.02.2021

Место нахождения

Город:	Бангкок
Район:	Sukhumvit (Central)

ДОПОЛНИТЕЛЬНАЯ ИНФОРМАЦИЯ

E-mail :	info@findthaiproperty.com
Mobile (import):	+66 (0) 800 844 727

Описание: This is the cheapest 2 Bedroom Unit at The Esse Asoke! Modern Luxury Unit for Rent at the brand new Esse Asoke available for rent. Located on 27th

Floor with Amazing View. Large Kitchen. The unit is Fully Furnished.with 2 large TVs, Washing Machine, Dining Table and large sofa.

Esse Asoke is one of the latest new luxury projects in the high-demand and central hub location of...View moreThis is the cheapest 2 Bedroom Unit at The Esse Asoke! Modern Luxury Unit for Rent at the brand new Esse Asoke available for rent.

Located on 27th Floor with Amazing View. Large Kitchen. The unit is Fully Furnished.with 2 large TVs, Washing Machine, Dining Table and large sofa.

Esse Asoke is one of the latest new luxury projects in the high-demand and central hub location of Asoke, Bangkok. This is among the most prime positions in the city due to Asoke being an important intersection for public transport where the MRT and BTS lines meet and joining Central Sukhumvit with the new Rama 9 CBD. Esse Asoke is only 500m from MRT Sukhumvit, and 750m from BTS Asoke. There is an outstanding range of facilities at Esse Asoke including: 1600m² garden, grand lobby, 33rd floor swimming pool, jacuzzi, kid\'s pool, fitness centre, 4 separate meeting rooms, super car parking, golf simulator, steam rooms, reading chamber, skyscraper deck, sculpture garden, and business centre with board rooms.

*2090*View less